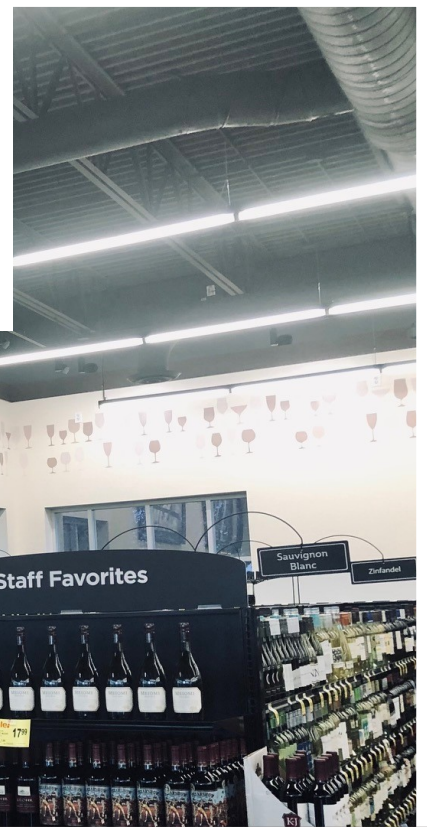


# EQUIPMENT SERVICES

PRODUCT CATALOG







# LIGHTING

## Equipment Services



## Inside this section:

<a href="#">General Lighting</a>	4
<a href="#">Specialty Lighting</a>	6
<a href="#">Service Department &amp; Office Lighting</a>	9
<a href="#">Checkstand Lighting</a>	11
<a href="#">Décor Lighting</a>	12
<a href="#">Walk-in Cooler Lighting</a>	13
<a href="#">Receiving &amp; Backroom Lighting</a>	14
<a href="#">Exterior/Safety Lighting</a>	17
<a href="#">Retrofit Lighting</a>	19
<a href="#">Decorative Lighting Solutions</a>	21
Lamps & Ballasts Coming Soon!	N/A

Contact UNFI Equipment Services for member pricing & ordering  
[equipmentservices@unfi.com](mailto:equipmentservices@unfi.com) or 1.800.835.0165

*Items in this catalog are subject to change & availability*



## CLX LED LINEAR STRIP

Product link: [CLX](#)

- Offers a permanent, attractive update to main sales floor lighting
- 45% energy savings over fluorescent T8
- Multiple outputs, lengths, lenses and mounting options



## SLOT LED SERIES

Product link: [SLOT 2](#)

- Choose linear pendants for your high-end sales floor
- Clean fixture design includes low-glare lens options
- Available with direct and indirect outputs

Lighting is highly configurable & customizable  
Additional site specific information will be required for quoting



## JCBL LED SERIES

Product link: [JCBL](#)

- Traditional round styling in an updated LED
- Multiple housings, reflectors and lenses
- Optional Bluetooth sensors and energy controls



## AMERLUX HIGH BAY 202

Product link: [High Bay 202](#)

- Round pendant LED designed for open ceiling concepts
- High CRI LEDs promise exceptional color rendering of fresh products
- Maximize energy savings with occupancy or daylight controls

Lighting is highly configurable & customizable  
Additional site specific information will be required for quoting



## SPEQ-M LED

Product link: [SPEQ-M](#)

- Produce & floral displays have never looked better
- The SPEQ-M's minimal design keeps the focus on the product
- High output options with excellent glare control for visual comfort



## HORNET LED

Product link: [HORNET](#)

- Brighten small displays with a big punch of light
- Spotlight high-revenue products with this affordable option
- The HORNET boasts a small, compact style designers love

Lighting is highly configurable & customizable  
Additional site specific information will be required for quoting

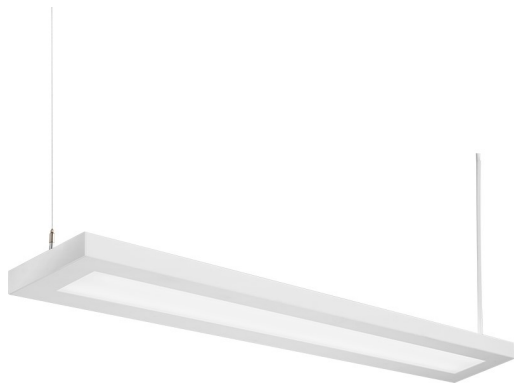




## MURV LED

Product link: [MURV](#)

- Highlight vertical displays with new track head technology
- Unique wide-spread optics illuminate vertical shelving products like wine displays
- MURV is small in size but big in output with dimmable control options



## GRAD LED

Product link: [GRAD](#)

- Rectilinear pendants brighten specialty kiosks
- Suspended fixtures offer classic styling
- Available in row or individual mounting

Lighting is highly configurable & customizable  
Additional site specific information will be required for quoting



## JCBL

Product link: [JCBL](#)

- Traditional round styling in an updated LED
- Multiple housings, reflectors and lenses
- Optional Bluetooth sensors and energy controls



## AMERLUX HIGH BAY 202

Product link: [High Bay 202](#)

- Round pendant LED designed for open ceiling concepts
- Maximize energy savings with occupancy or daylight controls
- High CRI LEDs promise exceptional color rendering of fresh products

Lighting is highly configurable & customizable  
Additional site specific information will be required for quoting





## EPANL LED

Product link: [EPANL](#)

- Highly configurable flat panel fixture boast long-life LEDs
- NSF listed for foodservice & easy to clean
- Short lead-times meet demanding schedules

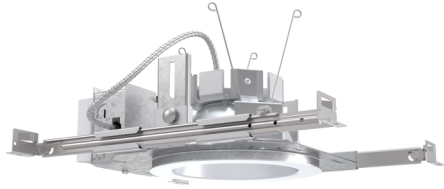


## BLT LED

Product link: [BLT](#)

- Architectural appeal and smart design fills departments with light
- Fast installation out of the box
- Easy dimming capabilities to save even more energy

Lighting is highly configurable & customizable  
Additional site specific information will be required for quoting



## LDN LED

Product link: [LDN](#)

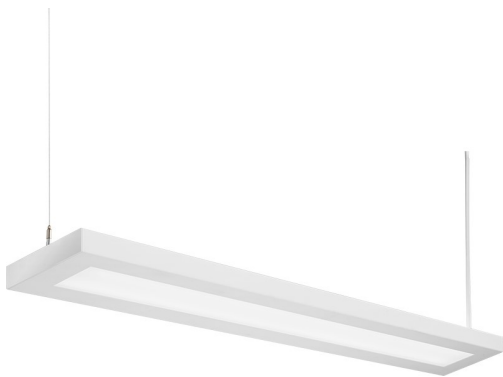
- Keep ceiling lines quiet and glare-free with new can lights
- Powerful outputs up to 12,000 lumens available in 4-10" apertures
- Hyperbolic trim options reduce glare and keep a comfortable focus on workstations



## CLX LED

Product link: [CLX](#)

- Extend sales floor lighting to check stands for cohesive aesthetic
  - Dimmable options allow high output at point-of-sale for high acuity
  - Clean aesthetic updates front of store
- 



## GRAD LED

Product link: [GRAD](#)

- Comfortable illumination for check stand lighting
- Suspended fixtures add classic styling to the front of store
- Diffused lighting at checkout for worker and customer visual comfort

Lighting is highly configurable & customizable  
Additional site specific information will be required for quoting



## MURV LED

Product link: [MURV](#)

- Highlight signage and lead customers to high-profit departments
- Unique wide-spread optics light up signage and brighten millwork
- Small size to keep focus on signage, not the lighting



## ZL1N LED

Product link: [ZL1N](#)

- Perimeter up-light increases customer perception of a bright, airy store
- The end-to-end installation option provides a consistent wash of light
- Easy installation with through-wiring options

Lighting is highly configurable & customizable  
Additional site specific information will be required for quoting





## DMW2 LED

Product link: [DMW2](#)

- Small in size, big in benefits
- Same performance as a 4' fixture in an affordable 2' fixture
- Snap-together construction for an easy, one-person installation

WALK-IN COOLER  
LIGHTING



## CSVT-LED

Product link: [CSVT](#)

- Affordable linear solution for lighting runs in coolers and other damp locations
- 4' and 8' fixtures are available in a large range of outputs
- Easy to install and maintain

Lighting is highly configurable & customizable  
Additional site specific information will be required for quoting



## IBG LED

Product link: [IBG](#)

- Increase product visibility and energy savings back-of-house
- High-bay mounting allows for high installation heights with increased fixture spacing
- A great one-to-one replacement of outdated high-output high bays utilizing existing power drops



## CPHB LED

Product link: [CPHB](#)

- Budget-oriented high-bay designed with the contractor in mind
- 30% faster installation and cleanup saves on installation cost
- Compact design with incredible efficiency of 135 lumens per watt

Lighting is highly configurable & customizable  
Additional site specific information will be required for quoting



## CLX LED

Product link: [CLX](#)

- Linear LED fixtures offer a cost-effective option for back-of-house lighting
- Row or individual mounting to meet narrow installation needs
- Dimming and emergency battery options with high lumens per watt



## CDS LED

Product link: [CDS](#)

- Cost-savings entry-level linear fixtures for back-of-house solutions
- Long-life LED's offer lower maintenance costs and higher ROI
- 8' fixtures allow cost-effective replacement of 4' fluorescents with fewer wiring connections

**Lighting is highly configurable & customizable**  
**Additional site specific information will be required for quoting**



## JEBL LED

Product link: [JEBL](#)

- Robust LED high bay withstands moisture and dust
- Ideal replacement for HID fixtures in demanding environments
- Easy installation saves on labor

RECEIVING &  
BACKROOM LIGHTING

Lighting is highly configurable & customizable  
Additional site specific information will be required for quoting





## RSX LED

Product link: [RSX](#)

- Superior illumination greets customers to a safe, bright parking lot
- One-for-one replacement of HID lighting with super-efficiency, up to 155 lumens per watt
- "no drill" solution saves up to 75% on installation labor



## WPX LED

Product link: [WPX](#)

- One series offers configurations and solutions for lower mounting heights up to 20 feet
- Competitive pricing and always in stock
- Wide distributions allow for extended spacing and more savings

Lighting is highly configurable & customizable  
Additional site specific information will be required for quoting



## ARC LED

Product link: [ARC](#)

- Visually comfortable wall-mounted fixture with reduced glare with high-end appeal
  - An architecturally pleasing form upgrades building styling
  - Ideal for over-the-door and wall mounting up to 15 feet
- 



## WDGE LED

Product link: [WDGE](#)

- A wall pack solution for all mounting heights
- Visually comfortable optics for lower mounting heights and area distributions for high installations
- Its clean lines blend into many architectural styles

Lighting is highly configurable & customizable  
Additional site specific information will be required for quoting



## BLTR LED

Product link: [BLTR](#)

- The look and performance of a new lay-in fixture with a labor-saving retrofit
- A quick, easy update for most existing troffers and parabolics
- Available in 2x4, 2x2 and 1x4 sizes



## LDNRV LED

Product link: [LDN](#)

- Retrofit your downlights in under four minutes
- Saves up to 80% of energy usage over HID and fluorescent options
- Increases product visibility and energy savings

Lighting is highly configurable & customizable  
Additional site specific information will be required for quoting



## LRT LED

Product link: [LRT12](#)

- Updates most existing 12" rough-in cans from below the ceiling line
  - The hyperbolic trim option creates a quiet, low-glare ceiling line
  - Averages 10 years of maintenance-free service
- 

Lighting is highly configurable & customizable  
Additional site specific information will be required for quoting



# DECORATIVE LIGHTING



## MAKE AN IMPACT STANDOUT

- Create drama in even the smallest spaces
- Creative & inviting solutions
- Transform & enhance on any budget



## Dependable Decorative Lighting Solutions

---

**Pendants**

**Sconces**

**Chandeliers**

**Goosenecks**

**Lanterns**

**Cylinders & Rings**

**Architectural**

**And much more**

**Contact UNFI Equipment  
Services for information**

**EMAIL: [EQUIPMENTSERVICES@UNFI.COM](mailto:EQUIPMENTSERVICES@UNFI.COM)**

**PHONE: 1.800.835.0165**



**BETTER FOOD. BETTER FUTURE.**

# **EQUIPMENT SERVICES**

**11840 Valley View Road  
Eden Prairie, MN 55344**