



# EQUIPMENT SERVICES

PRODUCT CATALOG







# FLORAL

## Equipment Services



## Inside this section:

<a href="#">Bouquet Displays</a>	4
<a href="#">Nesting Tables</a>	6
<a href="#">Plant &amp; Gift Displays</a>	7
<a href="#">Display Accessories</a>	14
<a href="#">Tools &amp; Accessories</a>	20
<a href="#">Watering</a>	22
<a href="#">Outdoor Displays</a>	23
<a href="#">Floral Smallwares Program</a>	26
Refrigeration—see refrigeration section	N/A

Contact UNFI Equipment Services for member pricing & ordering  
[equipmentservices@unfi.com](mailto:equipmentservices@unfi.com) or 1.800.835.0165

*Items in this catalog are subject to change & availability*



### MOBILE BOUQUET STAND

- Holds (3) 10" vases (included)
- Black stand
- Casters for mobility

ITEM NO	SIZE	DESCRIPTION
BD3A-C	18 1/2"d x 18 1/2"w x 33"h	INCLUDES VASES, SIGN CLIP & CASTERS



### 3-TIER BOUQUET BUCKET HOLDER

- Holds (3) 11" galvanized buckets (included)
- Casters for mobility
- Buckets hold standard 3-gallon grower/

ITEM NO	SIZE	DESCRIPTION
BD3G	28 1/2"d x 17"w x 43"h	INCLUDES BUCKETS, SIGN CLIP & CASTERS



### 4-TIER BOUQUET VASE HOLDER

- Holds (4) 15" galvanized vases (included)
- Silver tubular frame
- Casters for mobility

ITEM NO	SIZE	DESCRIPTION
BD4AG	28 1/2"d x 17"w x 43"h	INCL GALV VASES & LINERS, SIGN CLIP & CASTERS



### 3-TIER BOUQUET VASE HOLDER

- Holds (6) 10" designer vases (included)
- Black tubular frame
- Casters for mobility

ITEM NO	SIZE	DESCRIPTION
BD6H	28 1/2"d x 17"w x 43"h	INCL VASES, SIGN CLIP & CASTERS





## 4-TIER BOUQUET VASE HOLDER

- Holds (8) 10" designer vases (included)
- Black tubular frame
- Casters for mobility

ITEM NO	SIZE	DESCRIPTION
BD8H-100	28 1/2"d x 17"w x 43"h	INCLS VASES, SIGN CLIP & CASTERS



## ROUND MOBILE FLORAL DISPLAY

- Black metal display w/ laminate base
- Casters for mobility
- Incls: floral cones, shelves w/ PTM, holders for cards & bouquet bags

ITEM NO	SIZE	DESCRIPTION
FL-003 LAM CH	50"dia x 48"h	INCLS VASES, SIGN HOLDERS & CASTERS



## NESTING TABLES W/ SS TOPS

- Stainless steel tops & leg caps
- Tapered legs with choice of stain finish
- Sold individually so you can configure to your liking

ITEM NO	SIZE	DESCRIPTION
NT-82 OSS SV	36" w x 16" d x 24" h	STAINLESS STEEL TOPS
NT-80 OSS SV	48" w x 16" d x 29" h	STAINLESS STEEL TOPS
NT-81 OSS SV	60" w x 16" d x 34" h	STAINLESS STEEL TOPS



## FARMHOUSE STYLE TABLES

- Set of 3 tables
- Large table w/ turned legs & nesting benches
- Choice of stain finish for body & tops

ITEM NO	SIZE	DESCRIPTION
NT-35374 O150WH	(1) 60" L X 30" W X 32" H (2) 47" L X 15" D X 25" H	FARMHOUSE STYLE SET CHOICE OF FINISH FOR BODY & TOP



## LAMINATE TABLES W/ METAL FRAME

- Set of 3 tables
- Black metal frames w/ laminate inserts
- Choice of laminate

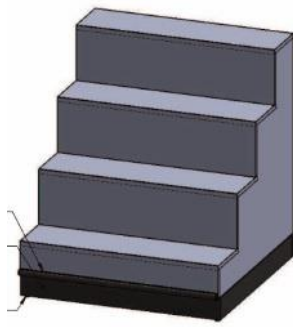
ITEM NO	SIZE	DESCRIPTION
38658-A NT-38658 RO	50" W X 20" D X 36" H	METAL FRAME, CHOICE OF LAMINATE INSERT



## LAMINATE NESTING TABLES

- Multiple sets to choose from
- Choice of laminate tops
- Square legs in solid wood with vertical corner guards

ITEM NO	SIZE	DESCRIPTION
NT-100 SET OSB	L: 60"x35", M: 48"x30", S: 36"x25" - All 30"d	LARGE 3 TABLE SET
NT-166 SET O150SB	L: 48"x29", M: 36"x24", S: 30"x19" - All 30"d	SMALL 3 TABLE SET
NT-171 SET O150SB	(1)L: 48"x29", (2)M: 36"x24", (2)S: 30"x19" - All 30"d	SMALL 5 TABLE SET
NT-177 SET O 150SB	L: 36"x29", M: 30"x24" - All 30"d	SMALL 2 TABLE SET



## FLORAL STEPS

- Choice of laminate
- 4 Steps, each measuring 9" deep
- Black bumper on front side only so units can sit flush

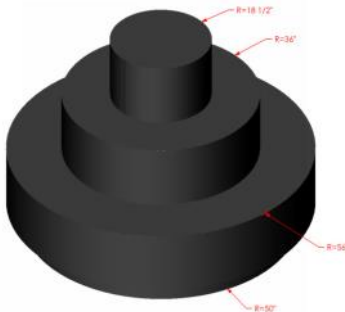
ITEM NO	SIZE	DESCRIPTION
FL-24324 BR LAM	18"W X 36"D X 40"H	4-STEP STRAIGHT
FL-35291 BR LAM	24"W X 36"D X 40"H	4-STEP STRAIGHT
FL-24325 BR LAM	30"W X 36"D X 40"H	4-STEP STRAIGHT
FL-24291 OSVSB	36"W X 36"D X 40"H	4-STEP STRAIGHT
FL-24319 BR LAM	48"W X 36"D X 40"H	4-STEP STRAIGHT
FL-24326 BR LAM	60" W X 36"D X 40"H	4-STEP STRAIGHT
FL-24320 OSV	36"W X 36"D X 40"H	4-STEP CORNER



## FLORAL STEPS - LOW PROFILE

- Choice of laminate
- 2 Steps, each measuring 12" deep
- Black bumper on front side only so units can sit flush

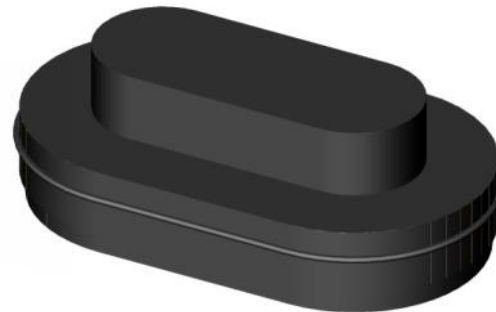
ITEM NO	SIZE	DESCRIPTION
FL-027 BIRCH	60"W X 36"D X 40"H	2-STEP LOW
FL-025 BIRCH	48"W X 36"D X 40"H	2-STEP LOW
FL-028 BIRCH	36"W X 36"D X 40"H	2-STEP LOW
FL-024 BIRCH	24"W X 36"D X 40"H	2-STEP LOW
FL-026 BIRCH	24"W X 36"D X 40"H	2 STEP RADIUS CORNER END



## ROUND STEP DISPLAY

- Black laminate
- 1 row of black bumper
- Non-locking casters

ITEM NO	SIZE	DESCRIPTION
RFD-BK LAMINATE	56" DIA X 41"H	3-STEP



## OVAL STEP DISPLAY

- Black laminate
- 1 row of black bumper
- Non-locking casters

ITEM NO	SIZE	DESCRIPTION
OVD-BK LAMINATE	84"W X 48"D X 28"H	2-STEP



## FLORAL TOWER SET

- Set of 3 towers on casters
- Black metal frame with glass shelves
- Top & base are fixed. 24"h: 2 adj shelves, 30"h: 2 adj shelves, 36"h: 3 adj shelves

ITEM NO	SIZE	DESCRIPTION
DISP-05 SET SB	24"w x 24"d x 24"h/30"h/36"h	SET OF 3



## FARMHOUSE GIFT TABLE

- Turned legs & decorative styling
- Center section with adjustable shelf

ITEM NO	SIZE	DESCRIPTION
BAK-1464 RD	60"W X 30"D X 32"H	CHOICE OF FINISH



## FARMHOUSE FLORAL HUTCH

- One row of 4 pull out drawers
- 2 open fixed shelves below
- Top cabinet with 2 adj shelves and bead-board back

ITEM NO	SIZE	DESCRIPTION
HUTCH-004 O	8'L X 25"D X 78"H	RUSTIC WHITE FINISH



## FLORAL GIFT HUTCH

- Lower cabinet w/ 1 adjustable shelf
- Upper cabinet w/ 2 adjustable shelves
- Fixed stainless steel counter, Crown molding on front only

ITEM NO	SIZE	DESCRIPTION
FL-044 O	3FT X 78"H X 22"D	CHOICE OF FINISH
FL-HUTCH 03 O	4FT X 78"H X 22"D	CHOICE OF FINISH
FL-HUTCH 05 O	5FT X 78"H X 22"D	CHOICE OF FINISH





## THREE-TIER STAND

- Adjustable shelves
- Shelf Diameters: 32", 28" & 24"
- Black powder coat, Includes casters

ITEM NO	SIZE	DESCRIPTION
TTS	32"w x 32"d x 48"h	BLACK POWDER COAT



## FOUR-TIER STAND

- Adjustable shelves
- Shelf Diameters: 32", 28", 24" & 20"
- Black powder coat, Includes casters

ITEM NO	SIZE	DESCRIPTION
TDS	32"w x 32"d x 61"h	BLACK POWDER COAT



## CIRCULAR DISPLAYS

- Adjustable shelves
- Shelf Diameters: 32", 28" & 24"
- Galvanized finish, Includes casters

ITEM NO	SIZE	DESCRIPTION
CD3000	32"w x 32"d x 54"h	GALVANIZED
CD4000	32"w x 32"d x 55 3/8"h	GALVANIZED
CD4000SH	11" x 7"	3-SIDED



## CIRCULAR DISPLAY WITH TOPPER

- Adjustable center shelf
- Fixed base & topper
- Galvanized finish, Includes casters



## 2-TIER CIRCULAR ISLAND

- Great for large merchandise
- Available with or without casters
- Galvanized finish

ITEM NO	SIZE	DESCRIPTION
CD3500	60" w x 60" d x 38" h	2-TIER GALVANIZED
CD3500-C	60" w x 60" d x 38" h	2-TIER GALVANIZED W/ CASTERS



## 3-TIER CIRCULAR ISLAND

- Great for large merchandise
- Available with or without casters
- Galvanized finish

ITEM NO	SIZE	DESCRIPTION
CD3550	60" w x 60" d x 61" h	3-TIER GALVANIZED
CD3550-C	60" w x 60" d x 61" h	3-TIER GALVANIZED W/ CASTERS



## XL 3-TIER CIRCULAR ISLAND

- Great for large merchandise
- Available with or without casters
- Galvanized finish

ITEM NO	SIZE	DESCRIPTION
CD3570	84" w x 84" d x 56 1/4" h	XL 3-TIER GALVANIZED
CD3570-C	84" w x 84" d x 56 1/4" h	XL 3-TIER GALVANIZED W/ CASTERS



## POINSETTIA TREE - 3 1/2' FULL

- Full round display
- Green finish
- (25) 6" Moveable Rings on 3 rows with 12" between rows. Holds 6"-6.5" pots

ITEM NO	SIZE	DESCRIPTION
071FB	3 1/2' h x 29" diameter	FULL ROUND TREE
3838	38" diameter x 2" h	BLACK PVC DRIP TRAY



## POINSETTIA TREE - 5 1/2' FULL

- Full round display
- Green finish
- (50) 6" Moveable Rings on 5 rows with 12" between rows. Holds 6"-6.5" pots

ITEM NO	SIZE	DESCRIPTION
1056	5 1/2'h x 41 3/8" diameter	FULL ROUND TREE
4949	49" diameter x 2"h	BLACK PVC DRIP TRAY



## POINSETTIA TREE - 6 1/2' FULL

- Full round display
- Green finish
- (70) 6" Moveable Rings on 6 rows with 12" between rows. Holds 6"-6.5" pots

ITEM NO	SIZE	DESCRIPTION
106FB	6 1/2'h x 48" diameter	FULL ROUND TREE
6262	62" diameter x 2"h	BLACK PVC DRIP TRAY



## POINSETTIA TREE - 3 1/2' HALF

- Half round display
- Green finish
- (13) 6" Moveable Rings on 3 rows with 12" between rows. Holds 6"-6.5" pots

ITEM NO	SIZE	DESCRIPTION
072W	3 1/2'h x 29"w x 15"d	HALF ROUND TREE
4619	46"w x 19"d x 2"h	BLACK PVC DRIP TRAY



## POINSETTIA TREE - 5 1/2' HALF

- Half round display
- Green finish
- (30) 6" Moveable Rings on 5 rows with 12" between rows. Holds 6"-6.5" pots

ITEM NO	SIZE	DESCRIPTION
104	5 1/2'h x 43"w x 21"d	HALF ROUND TREE
4925	49"w x 25"d x 2"h	BLACK PVC DRIP TRAY





## POINSETTIA TREE - 6 1/2' HALF

- Half round display
- Green finish
- (35) 6" Moveable Rings on 6 rows with 12" between rows. Holds 6"-6.5" pots

ITEM NO	SIZE	DESCRIPTION
102WM	6 1/2'h x 48"w x 24"d	HALF ROUND TREE
6231	62"w x 31"d x 2"h	BLACK PVC DRIP TRAY



## BENCHMASTER 2-TIER ROUND

- All-plastic display
- Use inside or outside
- Casters for mobility

ITEM NO	SIZE	DESCRIPTION
BC482402T	48"/30"dia x 28"h	WITH CASTERS
BC602402T	60"/36"dia x 28"h	WITH CASTERS



## BENCHMASTER 3-TIER ROUND

- All-plastic display
- Use inside or outside
- Casters for mobility



## BENCHMASTER 3-TIER W/ PLANT HANGER

- All-plastic display
- Use inside or outside
- Casters for mobility

ITEM NO	SIZE	DESCRIPTION
BC485003T	48"/36"/30"dia x 50"h	WITH CASTERS
BC605003T	60"/48"/36"dia x 50"h	WITH CASTERS



## BENCHMASTER 5-STEP PYR-AMID

- All-plastic display
- Use inside or outside
- Double sided display

ITEM NO	SIZE	DESCRIPTION
BC605003TP	60"/48"/36"dia x 86"h	WITH PLANT HANGER



## BENCHMASTER 5-STEP PYR-AMID W/ CASTERS

- All-plastic display
- Use inside or outside
- Double sided display w/ casters

ITEM NO	SIZE	DESCRIPTION
SC363605P	36"L x 63"W x 43"H	5-STEP PYRAMID W/ CASTERS
SC663605P	66"L x 63"W x 43"H	5-STEP PYRAMID W/ CASTERS
SC963605P	96"L x 63"W x 43"H	5-STEP PYRAMID W/ CASTERS



## BENCHMASTER 3-STEP WALL

- All-plastic display
- Use inside or outside
- Single sided display

ITEM NO	SIZE	DESCRIPTION
SM663603W	66"L x 39"W x 36"H	3-STEP DISPLAY
SM963603W	96"L x 39"W x 36"H	3-STEP DISPLAY



## BENCHMASTER 3-STEP PLANT HANGER PLUS

- All-plastic display
- Use inside or outside
- Includes bars for hanging baskets

ITEM NO	SIZE	DESCRIPTION
SM367203W	36"L x 63"W x 43"H	3-STEP DISPLAY W/ PLANT HANGER
SM667203W	66"L x 63"W x 43"H	3-STEP DISPLAY W/ PLANT HANGER
SM967203W	96"L x 63"W x 43"H	3-STEP DISPLAY W/ PLANT HANGER



## GALVANIZED VASES & LINERS

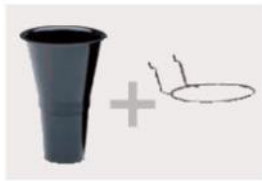
- Galvanized vases w/ handles
- Black plastic liners ordered separately
- Packed 6 per carton



## DESIGNER VASES

- Black plastic flared vases
- Packed 6 per carton

ITEM NO	SIZE	DESCRIPTION
FS10	10"H X 9" TOP DIA / 5.5" BASE DIA	PACK OF 6
FS13	13"H X 10.5" TOP DIA / 6.5" BASE DIA	PACK OF 6
FS16	16"H X 12.5" TOP DIA / 7" BASE DIA	PACK OF 6



## PEGBOARD/SLATWALL VASE KIT

- Rings hang on pegboard or slatwall
- Vases included
- 



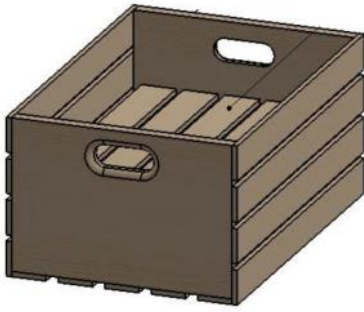
## WIRE GRID VASE KIT

- Rings hang on wire grid
- Vases included
- 

ITEM NO	SIZE	DESCRIPTION
PB24/SW24	10" VASES & RINGS	PACK OF 24
PB6/SW6	10" VASES & RINGS	PACK OF 6
PB6/SW6-GV12	12"GALV VASES, LINERS & RINGS	PACK OF 6

ITEM NO	SIZE	DESCRIPTION
WIRE KIT	10" VASES & RINGS	PACK OF 6





## WOOD CRATE W/ INSERT

- Includes removeable insert
- Handle cutouts
- Choice of stain finish

ITEM NO	SIZE	DESCRIPTION
CRATE-66 P	20" x 13 3/4" x 9 3/8"h	CHOICE OF STAIN



## STACKABLE FLORAL CUBES

- 2 sizes available
- Stackable design
- Black Plastic

ITEM NO	SIZE	DESCRIPTION
DC3	12" x 12" x 11"h	PACK OF 3
DC6	12" x 12" x 6"h	PACK OF 6



## ACRYLIC RISERS

- 2 sizes available
- Nesting
- Use to create better product visibility

ITEM NO	SIZE	DESCRIPTION
RIS4	6" x 6" x 4"h	PACK OF 6
RIS6	6" x 8" x 6"h	PACK OF 6



## BOUQUET BAG STANDS

- Holds multiple packs & sizes of bags
- Two styles available
- Self service sign included

ITEM NO	SIZE	DESCRIPTION
BBS-C	18" x 18" x 43 1/2"h	Mobile Base
BBS-P	11 3/4" x 11 3/4" x 39 1/2"h	Flat Base



CB (Clear)  
WB (Whiteback)

## BOUQUET BAGS

- 10 packs of 100 bags per box
- Two styles available
- Sealed bottoms

ITEM NO	SIZE	DESCRIPTION
144CB	13 1/2" top x 4" bottom x 25"h	Clear Back
144WB	13 1/2" top x 4" bottom x 25"h	White Back



## CHALKBOARD SIGNS & MARKERS

- Erasable chalkboard
- Colorful water-based markers
- Use with Classy or Free-Standing sign holders

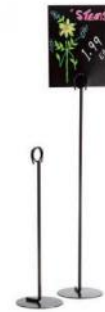
ITEM NO	SIZE	DESCRIPTION
CB57	5 1/2" x 7"	Pack of 6
CB711	7" x 11"	Pack of 6
CM-1 FM	Fine tip:	Pack of 5
	Pink, white, green, yellow, blue	
CM-2 FM	Broad tip:	Pack of 5
	Pink, green, yellow, orange, red	



## CLASSY SIGN HOLDERS

- Can be used vertically or horizontally
- Includes stand & optional adjustable stem
- Use with optional chalkboard inserts

ITEM NO	SIZE	DESCRIPTION
FAC57-FMS	5 1/2" x 7"	Pack of 6
FAC711-FMS	7" x 11"	Pack of 6



## FREE-STANDING SIGN HOLDERS

- Simple signing system
- Wire stand with clip to hold sign
- Use with optional chalkboard inserts

ITEM NO	SIZE	DESCRIPTION
FSSH-12	12" tall	Pack of 6
FSSH-18	18" tall	Pack of 6



## FLOWER BUYER'S GUIDE

- 14.5"H X 46.5"W
- Offers informative content for customers
- Use with the barn wood sign frames

ITEM NO	SIZE	DESCRIPTION
B3210158	14.5"H X 46.5"W	SINGLE SIDED FLOWER POWER BUYER'S GUIDE
B3410021	HANGING BARN WOOD SIGN HOLDER	USE WITH FLOWER GUIDE, INCL HANGING HOOKS
B3110084	HANGING KIT FOR BARNWOOD SIGN FRAME	MOUNTS BARN WOOD SIGN FRAME FROM CEILING
B3410022	BARN WOOD FRAME W/EASEL BASE	USE WITH FLOWER GUIDE



## BLANK FLORAL INSERTS

- SET OF 10
- Use with liquichalk pens
- Various sizes available



## FLORAL BASKET SIGN

- Set of 5 floral basket signs
- Includes jumbo spring clip
- Displays cut floral care instructions

ITEM NO	SIZE	DESCRIPTION
B1600009	6" ROUND SIGNS	RUGGED NON-SLIP CLIP GRIPS BINS & BASKETS



## FLORAL TAGS

- Sold per each
- Use with liquichalk pens
- Great for in-store promotions & sales

ITEM NO	SIZE	DESCRIPTION
B1307003	4"H X 6"W	SINGLE SIDED
1400002	LIQUICHALK MARKER KIT #1	14 MARKERS, VARIOUS COLORS
1400003	LIQUICHALK MARKER KIT #2	10 MARKERS, VARIOUS COLORS





## FLORAL SIGN KIT

- Includes storage box
- Signs, pricing & sign holders
- Includes everything you'll need to tag your floral department

ITEM NO	SIZE	DESCRIPTION
B1307002		
	4" X 6"W	31 FLORAL TAGS W/1-TRACK
	1-5/8" X 3"W	CHALK-DÉCOR NAME INSERT KIT
	1-1/4"	31 TAG-BANK PRICING STRIP SETS
	N/A	16 BLACK BUCKET CLIPS & 15 CLEAR BASKET CLIPS



## FLORAL SIGN HOLDER

- Adaptor fits around floral display posts
- Holds 11"w x 7"h sign inserts
- Indoor/Outdoor

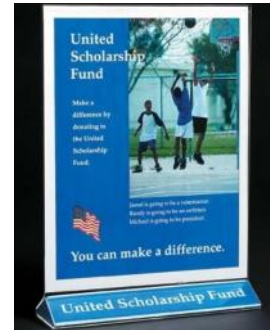
ITEM NO	SIZE	DESCRIPTION
82625	HOLDS INSERTS 11"W X 7"H X .02" THICK	SOLD IN KITS OF 5



## LIQUICHALK MARKERS

- Use with write-on floral tags & signs
- Kit #1: (2) ea white, yellow, peacock & red & (1) ea wisteria, carnation, violet, green, orange & marigold
- Kit #2: (2) ea witeria, honeysuckle & forget-me-not & (1) ea burnt sienna, butter-

ITEM NO	SIZE	DESCRIPTION
1400002	LIQUICHALK MARKER KIT #1	14 MARKERS, VARIOUS COLORS
1400003	LIQUICHALK MARKER KIT #2	10 MARKERS, VARIOUS COLORS



## COUNTERTOP FRAME

- Clear acrylic
- Top load
- Holds 8 1/2" x 11" paper insert

ITEM NO	SIZE	DESCRIPTION
2204737102	8 1/2"w x 11"h	CLEAR ACRYLIC SIGN HOLDER



## POSTERFRAME

- Square tubing
- Top load
- Holds 22"w x 28"h posters up to .25" thick

ITEM NO	SIZE	DESCRIPTION
9507737201	22"W X 28"H X .02" THICK INSERT	FLOOR STAND



## POSTERFRAME

- Chrome or black finish available
- Top load
- Holds 22"w x 28"h posters up to .25" thick

ITEM NO	SIZE	DESCRIPTION
9503566701	22"W X 28"H X .02" THICK INSERT	CHROME FINISH
9503566702	22"W X 28"H X .02" THICK INSERT	BLACK FINISH



## A-FRAME

- Indoor/Outdoor
- Metal, foldable
- Holds 22"w x 28"h graphics

ITEM NO	SIZE	DESCRIPTION
9509776901	22"W X 28"H GRAPHIC AREA	SUITABLE FOR OUTDOOR USE



**3RR**

- Holds 3 rows of ribbons
- Accommodates bolts up to 5 1/4" dia

ITEM NO	SIZE	DESCRIPTION
3RR	7 1/2"d x 18 1/2"w x 18"h	BLACK WIRE



**CTR**

- Holds 5 rows of ribbons
- Accommodates bolts up to 5 1/4" dia
- Includes ribbon spool holder & scissor holder

ITEM NO	SIZE	DESCRIPTION
CTR	11 3/4"d x 25"w x 36 1/2"h	BLACK WIRE



**CS7**

- Complete set
- Incls: 1. ribbon shears, 2. corsage snips
- 3. std floral shears, 4. pruner, 5. wire cutter, 6. knife, 7. hand stem stripper

ITEM NO	SIZE	DESCRIPTION
CS7	7 piece set	



**WH5**

- Organize wire and chenille for corsage and bow making

ITEM NO	SIZE	DESCRIPTION
WH5	5"d x 8"w x 12"h	Black Finish



## BBC

- Cut & shear stems with razor sharp blade
- Grippled handle is leveraged for minimal effort
- Includes a safety latch to lock blade in place when

ITEM NO	SIZE	DESCRIPTION
BBC	28"d x 5"h	Blade can be resharpened or replaced



## USC-2

- Stainless steel funnel 5" dia
- Comes with 2 extra blades
- Designed to accommodate the largest grower bunches & multiple std bunches

ITEM NO	SIZE	DESCRIPTION
USC-2	15"d x 24"w x 5"h	Green tub w/ SS funnel
USC-2B	6 blades per pack	Replacement blades



## SMA

- Stiffens flower stems with wire
- Simply insert stem & pull handle
- Magazine holds 100's of steel picks, steel picks not included

ITEM NO	SIZE	DESCRIPTION
SMA	4 1/4"d x 10 1/2"w x 11 1/2"h	





## UCWB14

- Includes removable work tray
- 24" 1-touch wand w/ 5" flexible no drip tip
- 12' super-flex hose w/ brass fittings, plus a multi-pocket nylon trash bag

ITEM NO	SIZE	DESCRIPTION
UCWB14	39"d x 18"w x 33"h	14 GALLON CAPACITY



## WB11

- Capacity 11 gallons
- Filling time 3 minutes
- Filled weight 129 lbs.

ITEM NO	SIZE	DESCRIPTION
WB11	24"d x 17"w x 26"h	11 GALLON CAPACITY



## WB14

- Capacity 14–16 gallons
- Filling time 4 minutes
- Filled weight 132 lbs.

ITEM NO	SIZE	DESCRIPTION
WB14	23"d x 18"w x 40"h	14-16 GALLON CAPACITY



## 4-STEP DISPLAY W/ OVER-HEAD RACK

- Mesh shelves allows good air flow
- 1" Tube steel construction
- 4-step with overhead frame merchandises potted and hanging plants together

ITEM NO	SIZE	DESCRIPTION
MET-FS 003 BK	60" X 48" X 74"	Black Powder Coat



## 3-STEP DISPLAY

- Mesh shelves allows good air flow
- 1" Tube steel construction
- Heavy-duty locking casters provide stability and mobility

ITEM NO	SIZE	DESCRIPTION
MET-FS BK	47 1/2" X 35 1/4" X 30 3/4"	Black Powder Coat



## BASKET HANGER DISPLAY

- Galvanized steel construction
- Capacity: (24) 10-inch hanging baskets
- Optional wreath kit holds (90) 24-inch wreaths

ITEM NO	SIZE	DESCRIPTION
BH3000	72"W X 73"D X 82"H	Basket hanger
BH3000-C	72"W X 73"D X 82"H	Basket hanger w/ casters
BH3000WK	72"W X 73"D X 82"H	Basket hanger w/ wreath kit
BH3000WK-C	72"W X 73"D X 82"H	Basket hanger w/ wreath kit & casters



## NARROW BASKET HANGER DISPLAY

- Galvanized steel construction
- Capacity: (47) 10-inch hanging baskets
- Unit comes standard w/ casters and fits through a 36-inch door frame

ITEM NO	SIZE	DESCRIPTION
BH4000	76"W X 34"D X 78"H	Basket hanger
BH4000WK	76"W X 34"D X 78"H	Basket hanger w/ wreath kit



## TRI STEP DISPLAY

- Galvanized steel construction
- Cap: (24) 1020-style flats per 6ft section
- Optional 48" h double purlin holds (12) 10" hanging baskets per 6ft section

ITEM NO	SIZE	DESCRIPTION
PX7020	73.25" w x 40" d x 44.5" h	Single unit
PX7020-C	73.25" w x 40" d x 44.5" h	Single unit w/ casters
PX7020-CP	73.25" w x 40" d x 92" h	Single unit w/ casters & purlin
PX7020-CS	73.25" w x 40" d x 44.5" h	Single unit w/ casters & sign holder
PX7020-P	73.25" w x 40" d x 92" h	Single unit w/ purlin
PX7020-S	73.25" w x 40" d x 44.5" h	Single unit w/ sign holder
EC7020	40" d x 44.5" h	End cap for PX7020
EC7020-C	40" d x 44.5" h	End cap w/ casters for PX7020-C*



## DOUBLE TRI STEP DISPLAY

- Galvanized steel construction
- Cap: (48) 1020-style flats per 6ft section
- Optional 48" h double purlin holds (24) 10" hanging baskets per 6ft section

ITEM NO	SIZE	DESCRIPTION
PX7021	73.25" w x 75.5" d x 44.5" h	Double sided unit
PX7021-P	73.25" w x 75.5" d x 92" h	Double sided unit w/ purlin
PX7021-S	73.25" w x 75.5" d x 44.5" h	Double sided unit w/ sign holder
EC7020	40" d x 44.5" h	Use 2 as end cap for PX7021



## FLAT MATE DISPLAY

- Galvanized steel construction
- Cap: (15) 1020-style flats per 6ft section
- Optional 39.25" H single basket purlin holds (6) 10" hanging baskets

ITEM NO	SIZE	DESCRIPTION
PX7025-CP	73.25" w x 26.5" d x 84" h	Single unit w/ casters & single purlin
EC7025-C	73.25" w x 26.5" d x 44.5" h	Single unit w/ casters



## NARROW 2-TIER DISPLAY

- Galvanized steel construction
- Cap: (12) 1020-style flats per 6ft section
- Optional 48" h double purlin holds (12) 10" hanging baskets per 6ft section

ITEM NO	SIZE	DESCRIPTION
PX7030-CP	73.25" w x 27.5" d x 78" h	2-Tier unit w/ casters & purlin
EC7030-C	24" x 35 1/2" h	1/2 Radius end cap



## EZ-MART GREENHOUSE

- Tool-Free Assembly
- Incls Side Benching & Hanging Purlins
- Slide-Side Ventilation & Latching End Door

ITEM NO	SIZE	DESCRIPTION
EZ3006	10"W X 6"L X 10"H	2-Step
EZ3012	10"W X 12"L X 10"H	2-Step
EZ3018	10"W X 18"L X 10"H	2-Step
EZ3024	10"W X 24"L X 10"H	2-Step



## Floral Solutions

HUBERT® and UNFI are proud to partner together to offer a direct order smallwares program to independent retailers. We understand the challenges food retailers face, so this program offers an array of benefits, products, and services

### Benefits & Services Include:

- Discounted Pricing
- Flat Rate Shipping
- Volume Discounting



### Products You Need, When You Need Them

Hubert© consistently delivers fast, accurate and low-cost fulfillment services

- Over \$20M in inventory and 30,000 + items available from a single warehouse.
- Our private label, HUBERT© Brand, quality cost saving items.
- 94% of all orders ship same day, 98% within 24 hours.
- 95% of all orders ship from the HUBERT© warehouse in Ohio, reducing the number of shipments to help manage freight cost.

### Project Management

Experienced team members on hand to assist with ordering & execution of smallwares standards

- Assistance developing standardized order guides
- Managing smallwares for new stores, remodels & resets
- Experts in visual merchandising
- Free consultation services

### HOW TO ORDER:

- Visit our website at [www.hubert.com](http://www.hubert.com)  
or call 1-800-543-7374
- Legacy Supervalu retailers use account # 809240
- Legacy UNFI retailers use account # 233779
- For convenient invoicing: Legacy Supervalu retailers on your UNFI Retailer statement. Legacy UNFI retailers HUBERT© invoice or credit card

**Contact UNFI Equipment  
Services for more information**



# EQUIPMENT SERVICES

11840 Valley View Road  
Eden Prairie, MN 55344